



Golding House Henry Avenue

, Matlock, DE4 3FL

£119,950



Golding House Henry

, Matlock, DE4 3FL

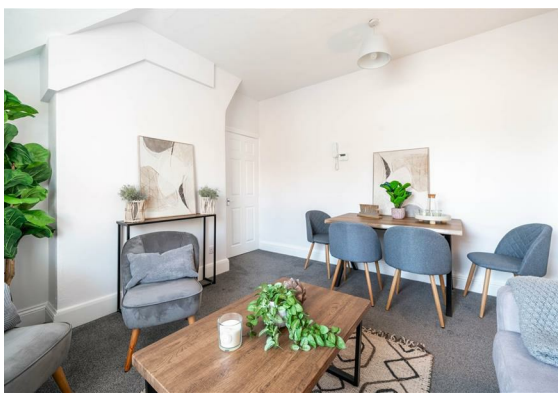
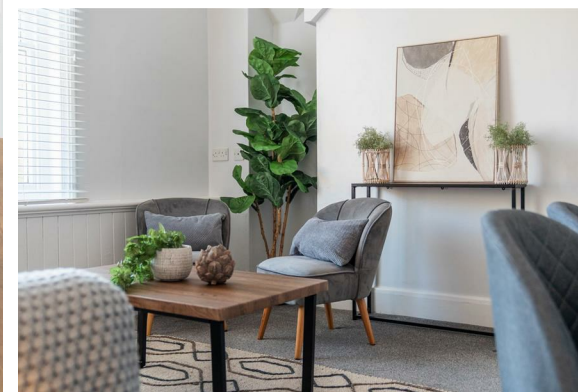
A deceptively spacious, one bedroom apartment, situated just a stones throw from the centre of Matlock Town Centre. Offering 463 sqft of living accommodation the apartment comprises; Living room with space for dining area, separate kitchen, shower room and double bedroom. The property also benefits from an allocated parking space and communal gardens off New Street.

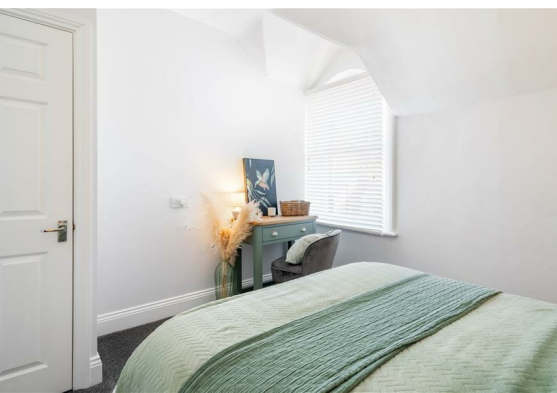
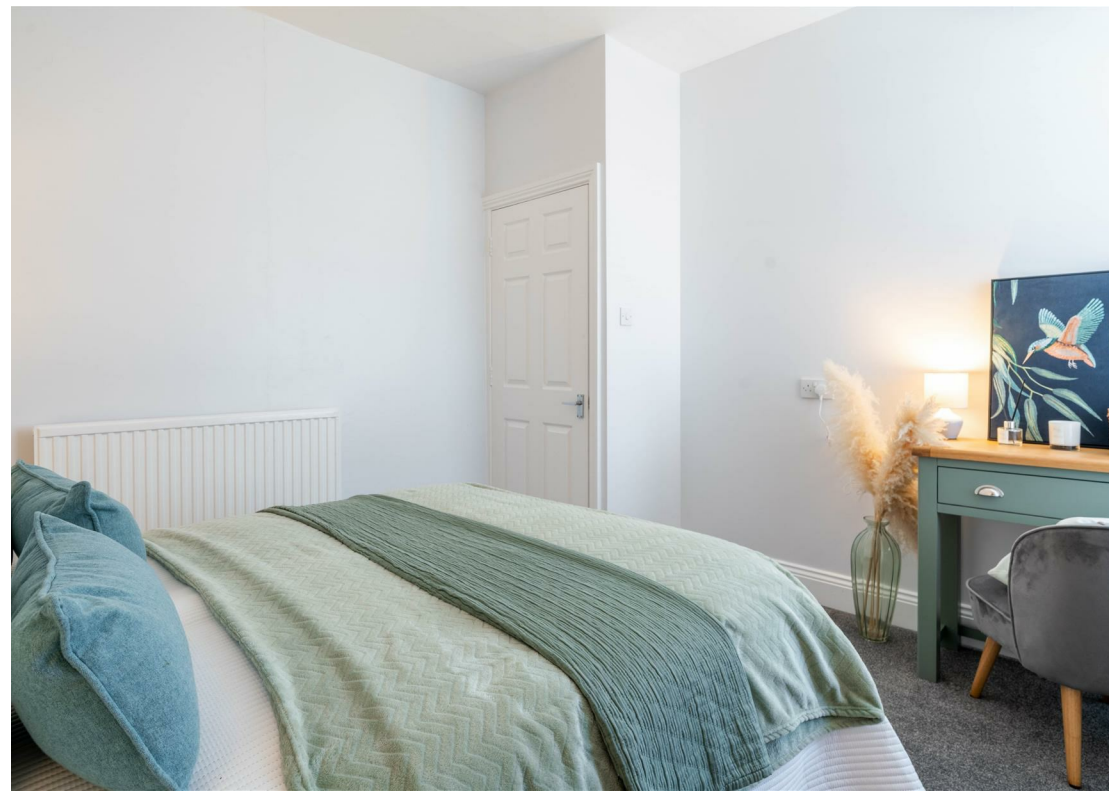
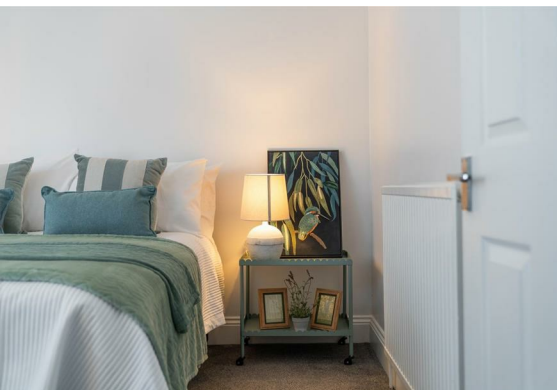
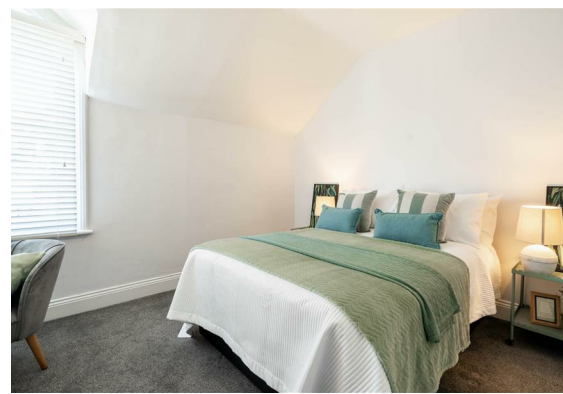
6 year build warranty

Length of lease; 999 years with a share of freehold

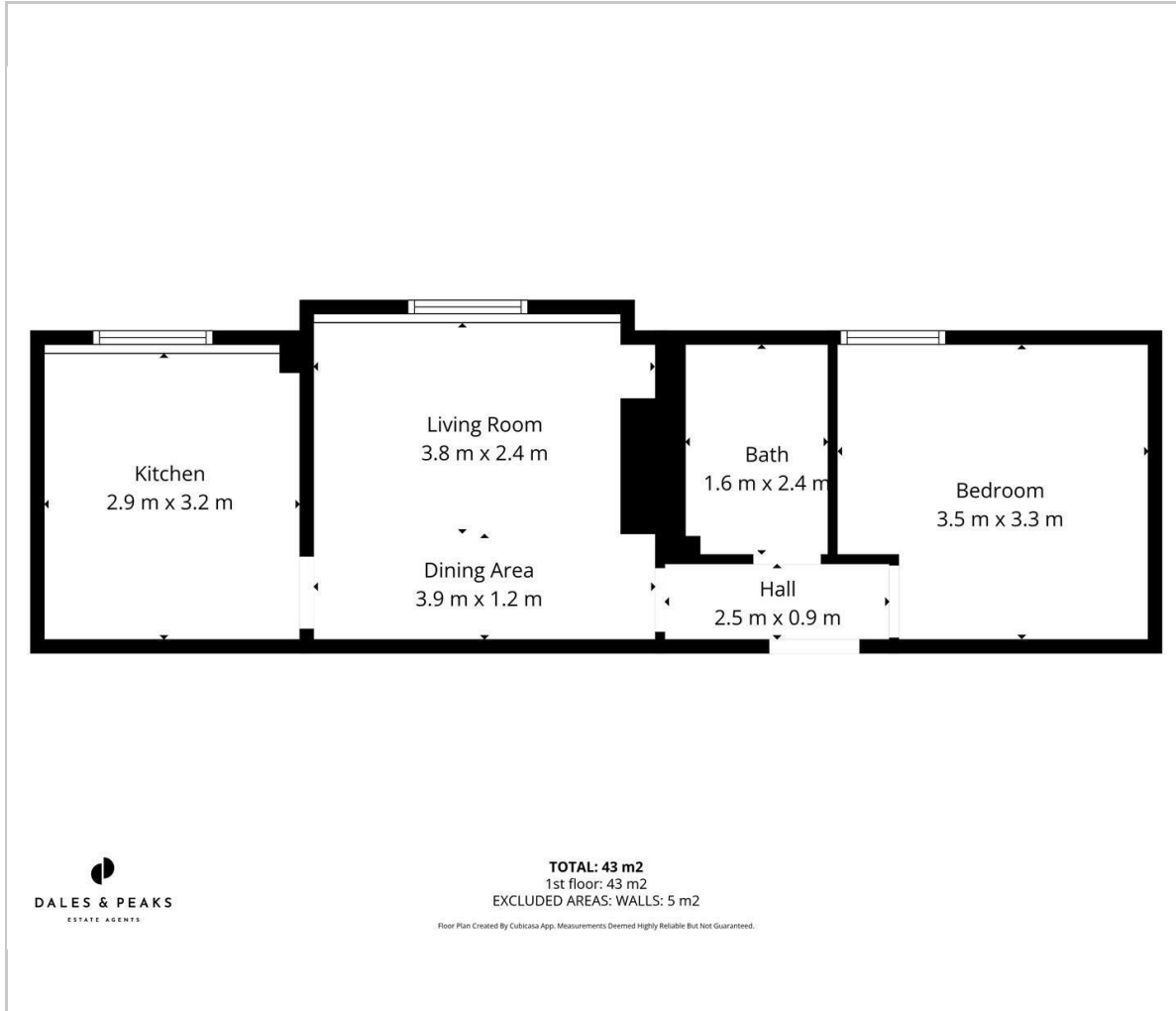
Ground rent; NIL

Service charge; £1560 per annum





Floor Plan



Viewing

Please contact our Chesterfield Office on 01246 567540 if you wish to arrange a viewing appointment for this property or require further information.

These particulars, whilst believed to be accurate are set out as a general outline only for guidance and do not constitute any part of an offer or contract. Intending purchasers should not rely on them as statements of representation of fact, but must satisfy themselves by inspection or otherwise as to their accuracy. No person in this firm's employment has the authority to make or give any representation or warranty in respect of the property.

Area Map



Energy Efficiency Graph

